

SAN BERNARDINO, CALIF.

A portion of Lots 3 and 4 Block 35, City of San Bernardino

POST MASTER'S CERTIFICATE

I, Sherman & Batchelor, hereby certify that I have personally seen concrete monuments six inches square and three feet long in place as shown upon annexed plat.

Sherman & Batchelor
Post Master for City of San Bernardino Calif.

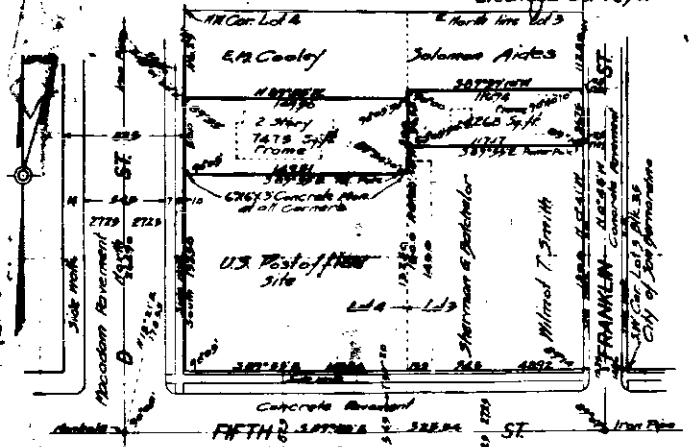
CITY ENGINEER'S CERTIFICATE

I, W.P. Burrill, certify that I am the City Engineer of the City of San Bernardino and that the true street and lot lines are properly shown on the annexed plat.

W.P. Burrill
City Engineer of the City of San Bernardino

Edgar T. Mann, hereby certify that I am a Licensed Land Surveyor of the State of California, and that the annexed map correctly represents a survey made under my supervision on June 27th 1920, and that all monuments shown actually exist, and their positions are correctly shown.

Edgar T. Mann
Licensed Surveyor



Concrete monuments 6x6x3 at all corners.
No encroachments upon surveyed sites, no building or set back lines established by agreement, law or ordinance.